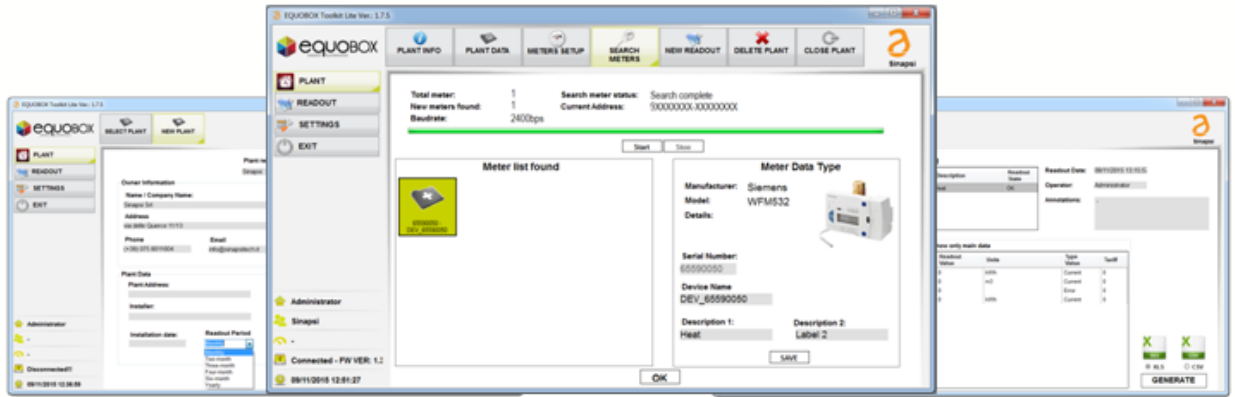


EQUOBOX TOOLKIT (SIN.EQSW1) is the complementary configuration management software for the device SIN.EQLC1

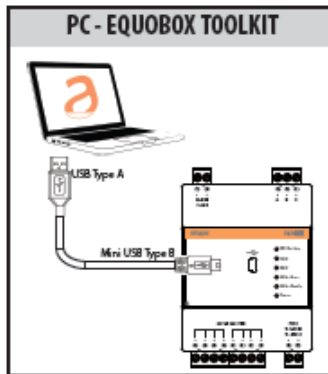


EASY TO USE

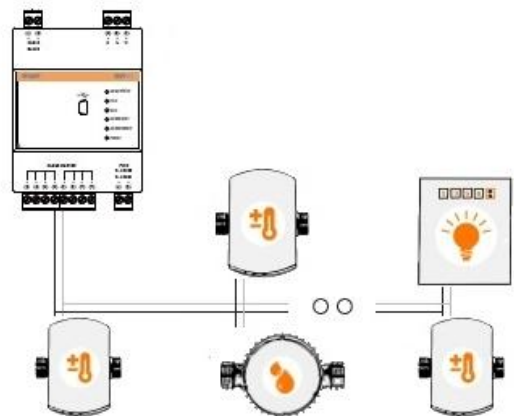
The software requires only a USB Ver 1.1 or major for reach the SIN.EQLC1 device

COMPLETE

Through EQUOBOX TOOLKIT (SIN.EQSW1) it's possible to manage a net M-Bus formed by a max of 60 device and create a report for every device



HARDWARE CONNECTION



CONFIGURATION REQUEST

Operative System supported

Windows XP, Windows Vista, Windows 7, Windows 8

HW

32bit or 64 bit processor, No 1 USB 1.1 port or higher

Necessary libraries

Microsoft C++ 2012 Ver 11.0.60.610 (included)

Language

English/Italian

SOFTWARE MODUELS

Configure the device interrogation

Possibility to program for the SIN.EQLC1

- Primary address
- Secondary address
- Baudrate

Schedule the reading devices

Possibility to schedule the device reading between

- monthly
- two-monthly
- three-mounthly
- four-monthly
- half-yearly
- yearly

Alarm report

Real time alarm device

Set of reports

Possibility to create. xls or .csv file reports for each device in the field according to the configured schedule regarding the reading devices

Activity Reporting

Reporting of any issues related to the connection with the device SIN.EQLC1

